



## Installation and Setup

### Step 1. Install the application and connect to the database.

D2 Sitelock v.3 supports 3 database formats: Microsoft Access, Microsoft SQL Server 2000/2005 and MySQL (tested on v4.1.5 and greater). Which one you choose depends on your personal preference and the options available to you within your hosting account. SQL Server and MySQL will give greater performance for very busy sites but are more difficult to set up if you do not have experience with this type of database. MS Access will give good performance for small to medium sites.

1. Unzip the D2 Sitelock archive that you downloaded from the D2 Computing website and upload the directory and all its contents to your website. Note, keep the directory structure of all the D2 Sitelock files intact, they must all be within the same folder on your site.
2. Obtain the required database file for your chosen database format:
  - If using MS Access, a copy of the .mdb database file is included in the D2 Sitelock source code directory
  - If using MS SQL, download the backup or .sql file from the D2 Sitelock members area.
  - If using MySQL, download the backup file from the D2 Sitelock members area.

**Setting up D2 Sitelock using MS Access: Page 2.**

**Setting up D2 Sitelock using SQL Server: Page 3.**

**Setting up D2 Sitelock using MySQL: Page 7.**

**Testing the connection (All Database versions): Page 8.**



### Setting up D2 Sitelock using MS Access:

Copy or move the D2Sitelockv3.mdb database file to a location on your server suitable for storing Access database files. If using an Internet service providers (ISP's) server to host your site, most of them designate a directory to be used for databases, as this will have the correct permissions already applied to it. If unsure, check your ISP's help files or support for details. If using your own server place the database file in any location you wish, preferably outside of the web root directory for security reasons e.g. E:\databases\ sitelockpro2.mdb. You must have the ability to set write permissions on the directory you have chosen, if unsure of how to do this, check with your ISP or if using your own server, view Microsoft's knowledgebase files on setting NTFS file and directory permissions. The database needs the Internet guest account (IUSR\_machinename) to have 'modify' permissions set on it to allow the creation and deletion of data from the database.

Open the 'Sitelockv3.asp' file located in the 'Connections' folder in the D2 Sitelock directory using a text editor such as notepad (do not use an application such as Frontpage). The code should look similar to that shown below.

Change the variables marked in red to suit your own site:

**' IMPORTANT, change the variables below to match your own server:**

**Dim D2SitelockDatabaseType**

**' This is the database type you wish to use, change the variable below to your own database type**

**' 1 = SQL Server 2000/2005**

**' 2 = MySQL**

**' 3 = Microsoft Access**

**' CHANGE THE NUMBER BELOW TO YOUR OWN DATABASE TYPE eg if using MySQL the line would read**

**D2SitelockDatabaseType = "2"**

**D2SitelockDatabaseType = "3"**

**Dim MM\_Sitelockv3\_STRING**

**Select Case D2SitelockDatabaseType**

**Case "1"**

**' SQL Server string, edit the datasource, UID, PWD and DATABASE fields to match your own site**

**MM\_Sitelockv3\_STRING = "PROVIDER=SQLOLEDB;DATA**

**SOURCE=127.0.0.1;UID=D2;PWD=D2;DATABASE=D2Sitelockv3"**

**Case "2"**

**' MySQL string, edit the Server, UID, PWD and Database fields to match your own site**

**MM\_Sitelockv3\_STRING = "Driver={MySQL ODBC 3.51**

**Driver};Server=myservername;Database=mydatabasename;Uid=myusername;Pwd=mypassword"**

**Case "3"**

**' MS Access string, edit the DBQ= variable and UID and Pwd (if using a username/password)**

**MM\_Sitelockv3\_STRING = "DRIVER={Microsoft Access Driver**

**(\* .mdb)};DBQ=e:\wwwroot\database\D2Sitelockv3.mdb;Uid=;Pwd=**

**End Select**

D2SitelockDatabaseType = "xx" - This is the database type you are using, for MS Access use "3"

MM\_Sitelockv3\_STRING = "xx" - This is the path to your database and needs to be changed according to where you placed the database on your server. If unsure of the path to use for your own database, check with your ISP.

It is recommended that you change the name of the database to something hard to guess like e46g64hf4be.mdb and update your connection string accordingly.



## Setting up D2 Sitelock using SQL Server:

Please note, only use SQL Server for your database format if you have experience in setting up databases of this type.

There are 2 ways to create the required SQL Server database on your own (or your ISP's) server either by running a database restore using the restore file available for download from the D2 Sitelock members area (easiest method) or by running the .sql script available for download from the D2 Sitelock members area.

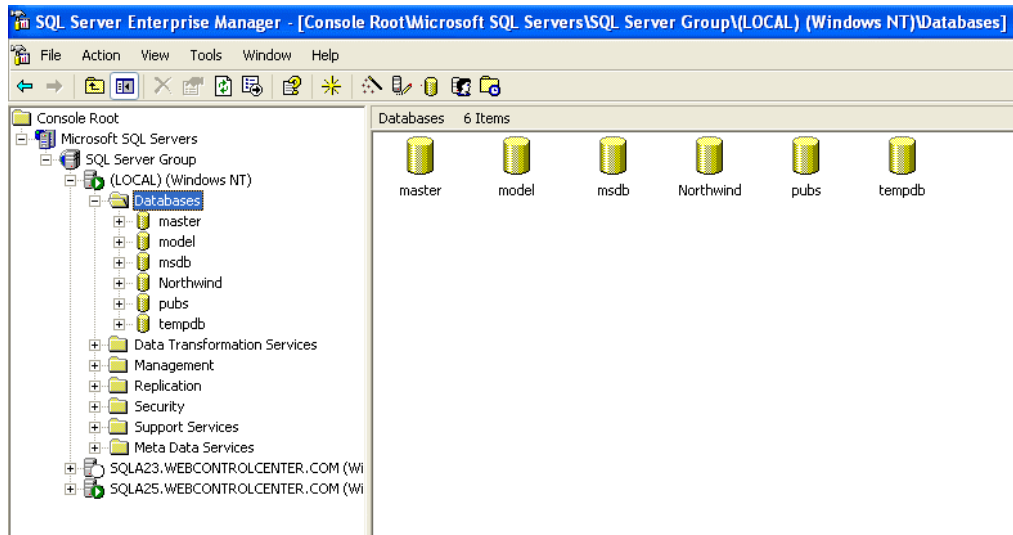
How you restore the database or execute the .sql script will depend on your hosting providers SQL Server configuration and tools available to you and as such only limited support can be provided during the setup of your database.

**Please note**, D2 Computing Ltd can provide an installation service where we will set up the database on your hosting providers server for you. See <http://www.d2computing.co.uk/sitelock3.asp> for further details.

The setup examples below assume you have access to a copy of SQL Server Enterprise Manager, this tool ships with SQL Server and enables configuration of local and remote databases.

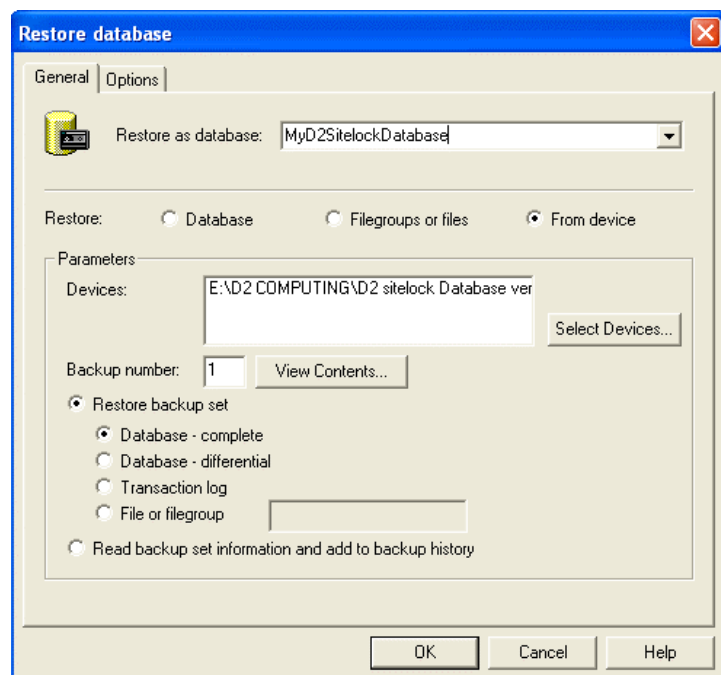
### 1. Using the D2 Sitelock SQL Server backup file.

Open Enterprise manager and make a connection to the server that you wish to create the database on, either the local server if running enterprise manager on the server that is used to host your website or add a new registration to a remote server if creating the database on your hosting providers server. This example is creating the database from scratch on the local server – You can also restore the backup file to an existing database if you wish.

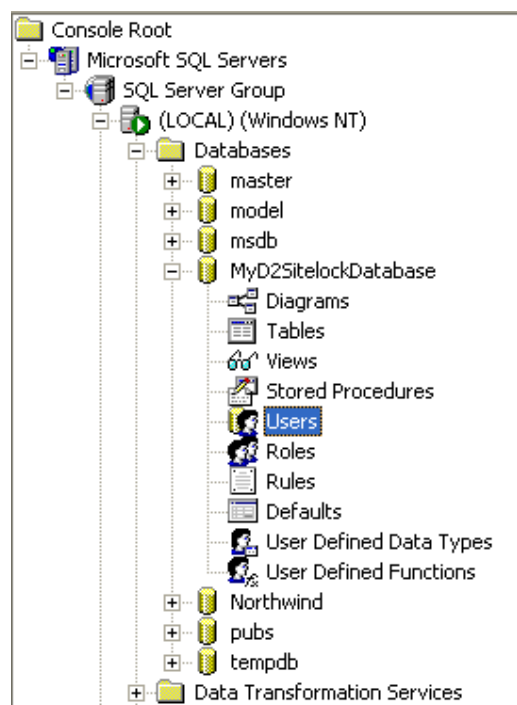


Right click on 'Databases' and choose 'All Tasks' → 'Restore database...'

Select the 'From Device' Radio Button and click the 'Select Devices' button. Make sure the 'Disk' radio button is selected and click the 'Add' button. This should open up a dialog box allowing you to browse to the location of the backup file you downloaded from the D2 Sitelock members area.



Choose a name for your new database, in this case 'MyD2SitelockDatabase' and click 'OK'. The database restore should then complete and Enterprise Manager should show the new database:





If you see errors and the database does not restore, check that you have adequate permissions to restore databases on the server. Some Providers will not allow you to restore databases. In this case you can send your provider the backup file and ask them to restore it on your behalf (Some providers will charge for this service).

Check that your new database contains the following tables: SLPaymentRecords, SLRedirection, SLMailTemplates, SLBlockedIP, SLUsers, SLVars and add a database user by right clicking on 'Users' → 'New Database User...'

## 2. Using the .sql script

This assumes you have access to a copy of SQL Server Query Analyser, your own provider may provide other 3<sup>rd</sup> party tools to run .sql files on your server.

Connect to your database server using SQL Server Query Analyser (tool that ships with SQL Server). Make sure your chosen database is selected in the destination dropdown at the top of the screen. Choose File→Open and navigate to the .sql file you downloaded from the D2 Sitelock members area.

This should open up the SQL query code in the main window as shown below:

 A screenshot of the SQL Query Analyzer application window. The title bar reads 'SQL Query Analyzer - [Query - pd\_pc.master.PD\_PC\Paul - E:\D2 COMPUTING\D2 sitelock Database versions\D2Sitelockv3.sql]'. The main window contains a script with the following SQL code:
 

```

if exists (select * from dbo.sysobjects wh[Execute Query (F5)]ct_id(N'[dbo].[SLBlockedIP]') and OBJECTPROPE
drop table [dbo].[SLBlockedIP]
GO

if exists (select * from dbo.sysobjects where id = object_id(N'[dbo].[SLDownloads]') and OBJECTPROPE
drop table [dbo].[SLDownloads]
GO

if exists (select * from dbo.sysobjects where id = object_id(N'[dbo].[SLMailTemplates]') and OBJECTF
drop table [dbo].[SLMailTemplates]
GO

if exists (select * from dbo.sysobjects where id = object_id(N'[dbo].[SLPaymentRecords]') and OBJECTI
drop table [dbo].[SLPaymentRecords]
GO

if exists (select * from dbo.sysobjects where id = object_id(N'[dbo].[SLRedirection]') and OBJECTPRC
drop table [dbo].[SLRedirection]
GO

if exists (select * from dbo.sysobjects where id = object_id(N'[dbo].[SLUsers]') and OBJECTPROPERTY(
drop table [dbo].[SLUsers]
GO

if exists (select * from dbo.sysobjects where id = object_id(N'[dbo].[SLVars]') and OBJECTPROPERTY(i
drop table [dbo].[SLVars]
  
```

Run the query by pressing the 'Execute Query' button (green arrow) and the bottom pane should display the text 'The command(s) completed successfully.' If all has gone well.

You should now see that tables: SLPaymentRecords, SLRedirection, SLMailTemplates, SLBlockedIP, SLUsers, SLVars have been created in your selected database.

## 3. Connecting SQL Server to the D2 Sitelock Admin interface:

Open the 'Sitelockv3.asp' file located in the 'Connections' folder in the D2 Sitelock directory using a text editor such as notepad (do not use an application such as Frontpage). The code should look similar to that shown below.

Change the variables marked in red to suit your own site:



' **IMPORTANT**, change the variables below to match your own server:

Dim D2SitelockDatabaseType

' This is the database type you wish to use, change the variable below to your own database type

' 1 = SQL Server 2000/2005

' 2 = MySQL

' 3 = Microsoft Access

' **CHANGE THE NUMBER BELOW TO YOUR OWN DATABASE TYPE** eg if using MySQL the line would read

D2SitelockDatabaseType = "2"

**D2SitelockDatabaseType = "1"**

Dim MM\_Sitelockv3\_STRING

Select Case D2SitelockDatabaseType

Case "1"

' SQL Server string, edit the datasource, UID, PWD and DATABASE fields to match your own site

MM\_Sitelockv3\_STRING = "PROVIDER=SQLOLEDB;DATA

SOURCE=127.0.0.1;UID=D2;PWD=D2;DATABASE=D2Sitelockv3"

Case "2"

' MySQL string, edit the Server, UID, PWD and Database fields to match your own site

MM\_Sitelockv3\_STRING = "Driver={MySQL ODBC 3.51

Driver};Server=myservername;Database=mydatabasename;Uid=myusername;Pwd=mypassword"

Case "3"

' MS Access string, edit the DBQ= variable and UID and Pwd (if using a username/password)

MM\_Sitelockv3\_STRING = "DRIVER={Microsoft Access Driver

(\*.\*.mdb);DBQ=e:\wwwroot\database\D2Sitelockv3.mdb;Uid=;Pwd="

End Select

D2SitelockDatabaseType = "xx" - This is the database type you are using, for SQL Server use "1"

MM\_Sitelockv3\_STRING = "xx" - This is the path to your database and needs to be changed according to your servers. If unsure of the path to use for your own database, check with your ISP.

### Setting up D2 Sitelock using MySQL:

Due to the different versions of MySQL available and the open source nature of the application, only limited support can be provided for an instance of D2 Sitelock running on MySQL.

D2 Sitelock is developed and tested using MySQL 4.1.5

This assumes you have access to the 'MySQL Administrator' tool:

1. Click on the 'Restore' icon to launch the restore process. Click 'Open Backup File' and navigate to the MySQL .sql file downloaded from the D2 Sitelock members area.
2. Under the 'Target Schema' dropdown, select 'New Schema' and enter the required name for your database, in this example 'MyD2SitelockDatabase'
3. If you do not have an existing database to restore to then tick the 'Create database(s) if they don't exist' checkbox.
4. If prompted to choose a character set, the encoding to use is UTF-8
5. Click the 'Execute backup now' button
6. If an error occurs, try deselecting the 'Create database(s) if they don't exist' checkbox and try again.



The new database should now be shown in the 'Catalogs' section of MySQL Administrator. Check that the following tables have been created: SLPaymentRecords, SLRedirection, SLMailTemplates, SLBlockedIP, SLUsers, SLVars.

### Connecting MySQL to the D2 Sitelock Admin interface:

Open the 'Sitelockv3.asp' file located in the 'Connections' folder in the D2 Sitelock directory using a text editor such as notepad (do not use an application such as Frontpage). The code should look similar to that shown below.

Change the variables marked in red to suit your own site:

**' IMPORTANT, change the variables below to match your own server:**

**Dim D2SitelockDatabaseType**

**' This is the database type you wish to use, change the variable below to your own database type**

**' 1 = SQL Server 2000/2005**

**' 2 = MySQL**

**' 3 = Microsoft Access**

**' CHANGE THE NUMBER BELOW TO YOUR OWN DATABASE TYPE eg if using MySQL the line would read**

**D2SitelockDatabaseType = "2"**

**D2SitelockDatabaseType = "2"**

**Dim MM\_Sitelockv3\_STRING**

**Select Case D2SitelockDatabaseType**

**Case "1"**

**' SQL Server string, edit the datasource, UID, PWD and DATABASE fields to match your own site**

**MM\_Sitelockv3\_STRING = "PROVIDER=SQLOLEDB;DATA**

**SOURCE=127.0.0.1;UID=D2;PWD=D2;DATABASE=D2Sitelockv3"**

**Case "2"**

**' MySQL string, edit the Server, UID, PWD and Database fields to match your own site**

**MM\_Sitelockv3\_STRING = "Driver={MySQL ODBC 3.51**

**Driver};Server=myservername;Database=mydatabasename;Uid=myusername;Pwd=mypassword"**

**Case "3"**

**' MS Access string, edit the DBQ= variable and UID and Pwd (if using a username/password)**

**MM\_Sitelockv3\_STRING = "DRIVER={Microsoft Access Driver**

**(\* .mdb)};DBQ=e:\wwwroot\database\D2Sitelockv3.mdb;Uid=;Pwd="**

**End Select**

D2SitelockDatabaseType = "xx" - This is the database type you are using, for MySQL Server use "2"

MM\_Sitelockv3\_STRING = "xx" - This is the path to your database and needs to be changed according to your servers. If unsure of the path to use for your own database, check with your ISP.

### Testing the connection (All Database versions)

Now your database is set up and the D2 sitelock application files have been uploaded to your website you can test that the admin interface can 'talk' to your database.

Open the D2 Sitelock admin interface in your web browser by pointing to the URL:



---

[http://www.mysite.com/Sitelock\\_3/sitelock.asp](http://www.mysite.com/Sitelock_3/sitelock.asp)

(Obviously changing the URL above point to your own site/sitelock directory)

You should be presented with a login screen, the default login for the admin interface is:

Username: d2admin

Password: d2admin

This should successfully open up D2 Sitelock. If not, check the common error section below:

#### **Common Errors:**

The following error messages result from misconfiguration of the database or connection strings. If you experience errors when initially setting up the application then try to match the error you see in your web browser against one of the below: (Note when attempting to view errors in your web browser, make sure the following is not selected in internet Explorer: Tools→Internet Options→Advanced→'Show friendly http error messages').

#### **SQL Server**

##### **Error Type:**

**Microsoft OLE DB Provider for SQL Server (0x80040E4D)**

**Login failed for user 'someusername'.**

The login username/password you have set in the connection string (connections/Sitelockv3.asp) does not have permissions to read or write to the database or you have typed the username or password incorrectly in the connection string. Check the assigned users for the database using Enterprise Manager or your hosting providers database tools.

---

##### **Error Type:**

**Microsoft OLE DB Provider for SQL Server (0x80004005)**

**[DBNETLIB][ConnectionOpen (Connect()).]SQL Server does not exist or access denied.**

The server name you supplied in the connection string (connections/Sitelockv3.asp) is invalid or the server could not be contacted. Check the name is correct, you can use either an IP address or fully qualified name (myserver.myhosts.com). Check no firewalls exist between your web server and database server (this is only likely in your own test environment, if using your hosting providers own web/database servers then this is unlikely to be the case).

---

##### **Error Type:**

**Microsoft OLE DB Provider for SQL Server (0x80004005)**

**Cannot open database requested in login 'somedatabasename'. Login fails.**

The database name specified in the connection string (connections/Sitelockv3.asp) is invalid. Check the name of the database in the connection string (DATABASE=Somedatabasename), this error suggests that there is no database of that name on the server.

---

##### **Error Type:**

**Microsoft OLE DB Provider for ODBC Drivers (0x80004005)**

**[Microsoft][ODBC Driver Manager] Data source name not found and no default driver specified**



---

The wrong database driver type has been specified in your database connection string (connections/Sitelockv3.asp) i.e you have selected D2SitelockDatabaseType = "2" rather than D2SitelockDatabaseType = "1" for SQL server. In this case you have specified that the database type is MySQL and there is no MySQL driver installed on the server.

---

**Error Type:**  
**Microsoft OLE DB Provider for SQL Server (0x80004005)**  
**Invalid connection string attribute**

The syntax of your connection string (connections/Sitelockv3.asp) is wrong, check you have not made a typo error when editing the string, a correct SQL Server connection string should look like:

```
"PROVIDER=SQLOLEDB;DATA  
SOURCE=127.0.0.1;UID=myusername;PWD=mypassword;DATABASE=mydatabasename"
```

(Should all be on a single line)

---

## MySQL

**Microsoft OLE DB Provider for ODBC Drivers error '80004005'**

**[MySQL][ODBC 3.51 Driver]Can't connect to MySQL server on 'someserveraddress' (10060)**

The server name you supplied in the connection string (connections/Sitelockv3.asp) is invalid or the server could not be contacted. Check the name is correct, you can use either an IP address or fully qualified name (myserver.myhosts.com). Check no firewalls exist between your web server and database server (this is only likely in your own test environment, if using your hosting providers own web/database servers then this is unlikely to be the case).

---

**Microsoft OLE DB Provider for ODBC Drivers error '80004005'**

**[MySQL][ODBC 3.51 Driver]Access denied for user 'someuser'@'%' to database 'd2sitelockv31'**

The login username/password you have set in the connection string (connections/Sitelockv3.asp) does not have permissions to read or write to the database or you have typed the username or password incorrectly in the connection string. Check the assigned users for the database using MySQL Administrator or your hosting providers database tools. This can also result from the database name in your connection string being invalid.

---

**Data source name not found and no default driver specified**

The MySQL ODBC 3.51 Driver is not installed on the server.

---



---

## Ms Access

### Microsoft OLE DB Provider for ODBC Drivers error '80040e4e'

#### Operation was canceled.

The syntax of your connection string (connections/Sitelockv3.asp) is wrong, check you have not made a typo error when editing the string, a correct MS Access connection string should look like:

```
"DRIVER={Microsoft Access Driver (*.mdb)};DiBQ=d:\webDB\D2Sitelockv3.mdb;Uid=;Pwd="
```

(Should all be on a single line).

---

### Microsoft OLE DB Provider for ODBC Drivers error '80004005'

**[Microsoft][ODBC Microsoft Access Driver]General error Unable to open registry key 'Temporary (volatile) Jet DSN for process 0xba4 Thread 0xf34 DBC 0x140700c Jet'.**

The path to the .mdb file set in your connection string (connections/Sitelockv3.asp) is incorrect, the database does not exist at this location **Or** the IUsr\_machinename (internet guest account) does not have sufficient permission to open the database.

---

### Provider error '80004005'

#### Unspecified error

Reset IIS if possible